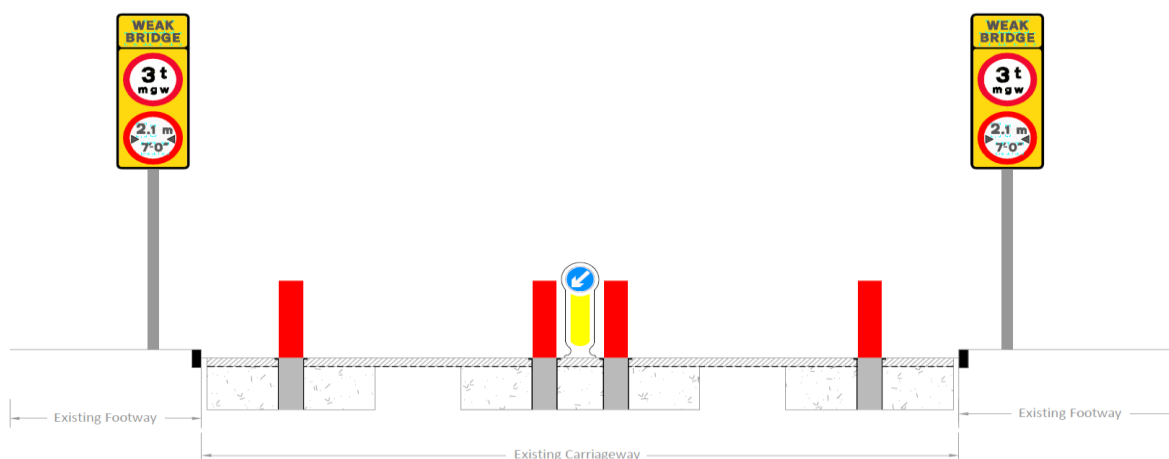


### TRAFFIC RESTRICTION

The proposed 3tonne restriction will be “self-enforcing”, via the use of a traffic width restriction of 2.1m at each end together with appropriate signage from either direction. Similar to the system previously used on South Bridge Oundle.

The restrictions on North Bridge will only apply to vehicles in excess of 3tonnes and all standard car/motorcycle traffic will not be affected. The 3tonne restriction would allow 2 way car traffic to continue over the structure, minimising traffic disruption and delay, only vehicles more than 3tonnes would be excluded.



### The works programme for installation of weight limit of North Bridge

21<sup>st</sup> January 2019 - Install weight restriction signage - COMPLETE

25<sup>th</sup> March 2019 - Width Restriction works due to start for approximately 6 days, the start date is subject to change as we are planning and programming our works so that they do not impact on key events in Oundle such as the end of term at Oundle School.



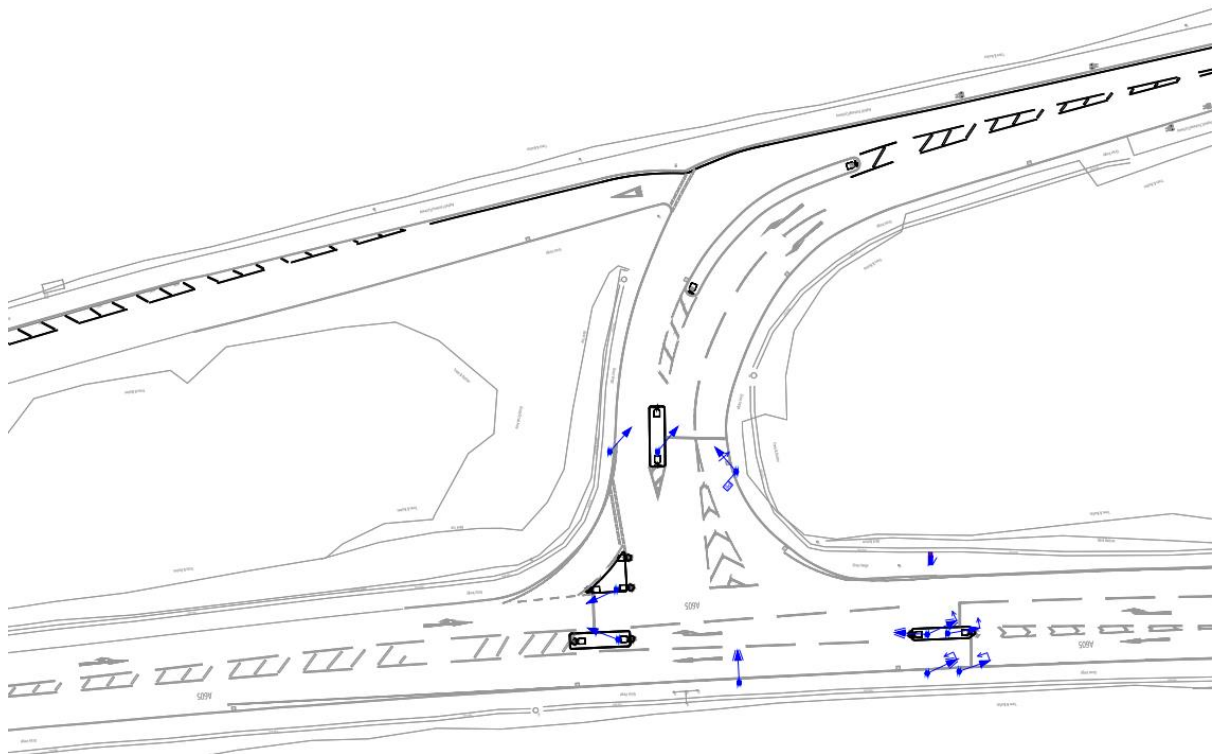
### A605 / Barnwell Road Signalisation

As part of the mitigation works the junction at the A605 / Barnwell Road will be signalised, this will help ease access on to the A605 which can be difficult at the best of times. The signalised junction will be monitored upon completion so that, as much as possible, it does not have an adverse impact on the A605 / Well Lane junction at Barnwell.

### Key Dates

11<sup>th</sup> February 2019 - Advanced ducting works along Barnwell Road to connect electricity supply to signal controller – 1 week, these works are being co-ordinating our GIGA Clear's works

18<sup>th</sup> February 2019 – Junction signalisation works commence



### TRAFFIC MANAGEMENT

We are continuing to monitor traffic movements in and around Oundle, a time lapse is being used over North Bridge to deter vehicles in excess of 3t from using the bridge whilst the width restriction works take place. Unfortunately we cannot use this information to prosecute drivers for infringing the restriction.

We will continue to update on the [Northamptonshire.gov](http://Northamptonshire.gov) website and provide updates on twitter [@nhighways](https://twitter.com/nhighways).

For more information please email [NorthBridgeOundle@kierwsp.co.uk](mailto:NorthBridgeOundle@kierwsp.co.uk)